

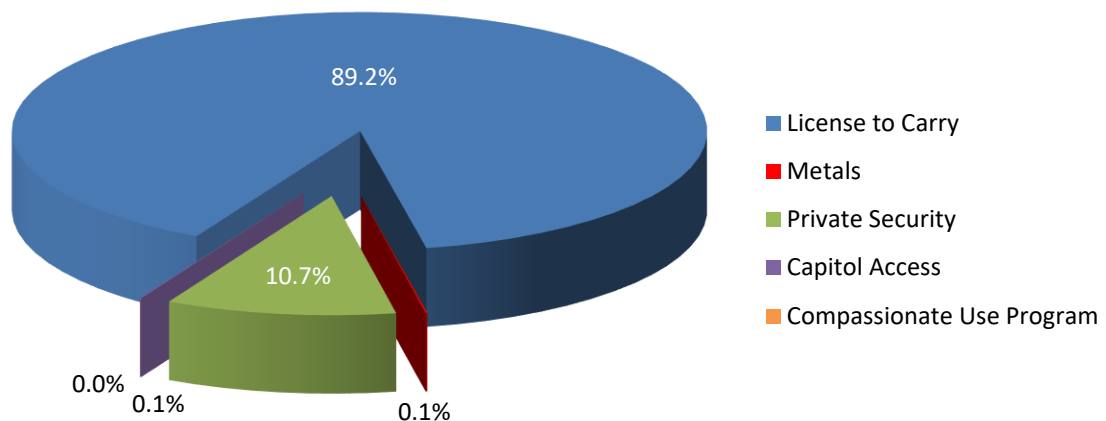
TEXAS DEPARTMENT OF PUBLIC SAFETY

REGULATORY SERVICES DIVISION

December 2017

LICENSING & REGISTRATION SERVICE

Active Licenses & Registrations



License to Carry		Metals		Private Security			Capitol Access	Compassionate Use Program
Holders	Instructors	Dealers	Locations	Companies	Individuals	Schools	Holders	Holders
1,244,944	4,075	456	687	5,787	143,461	415	827	3

SERVICE HIGHLIGHTS:

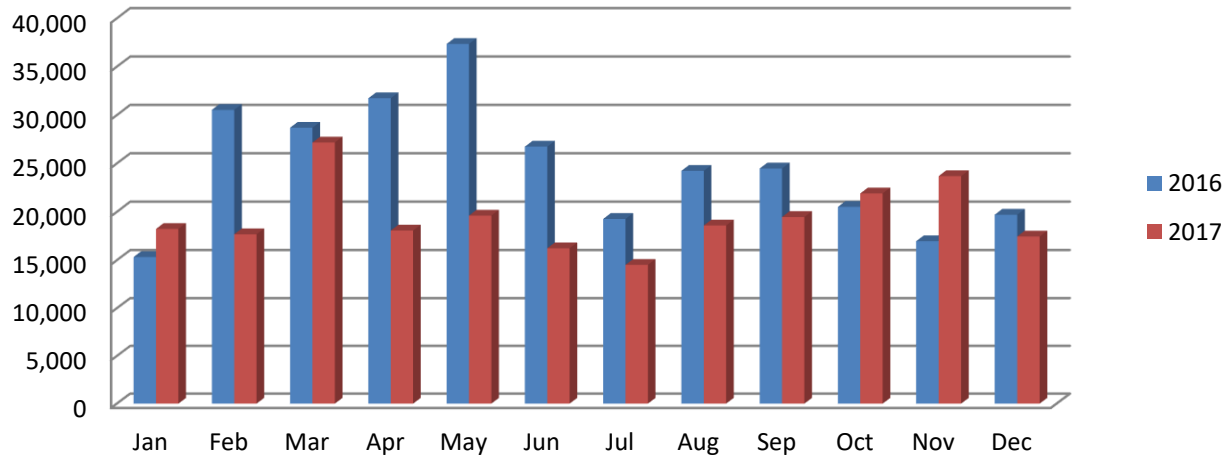
- Total Regulatory active licenses: 1,400,655.
- Active licenses increased 8.1% from December 2016 to December 2017.
- The largest component is individual license to carry holders/instructor certificates, which constitutes 89% of the total. Active LTCs increased 8.2% from December 2016 to December 2017.

TEXAS DEPARTMENT OF PUBLIC SAFETY

REGULATORY SERVICES DIVISION

December 2017

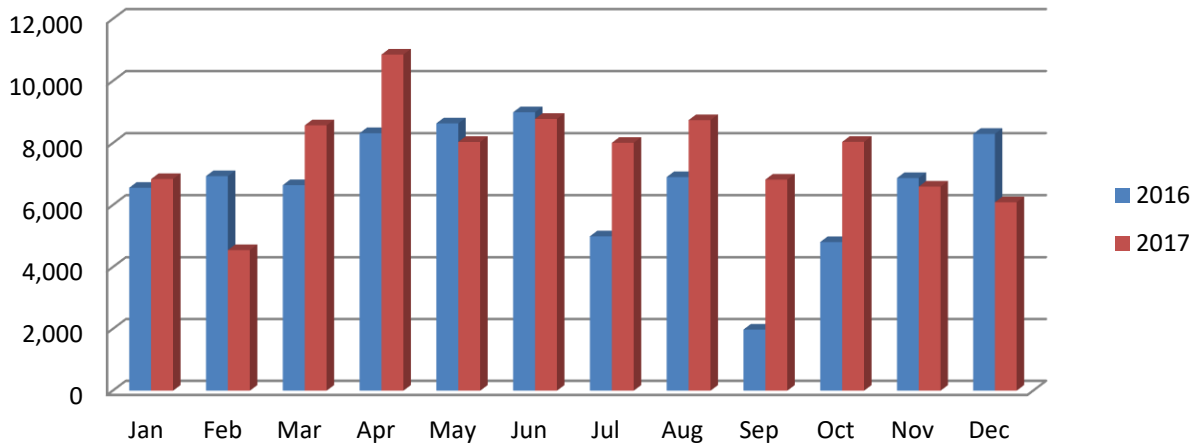
Handgun Licenses and/or Registrations Issued



Handgun Licensing Highlights:

- 232,603 total licenses issued December CYTD: 295,542 were issued during the same period in CY2016.
- CY2017: 42.2% of those were original and 57.8% renewals.
- Average 19,384/month mailed January-December 2017 compared to 24,629 in CY2016.
- An additional 133,389 licenses were mailed January-December 2017 (composed of licenses subject to review, re-mails, returns by post office, address/name changes and lost/stolen replacements).

Private Security Licenses and/or Registrations Issued



Private Security Licensing Highlights:

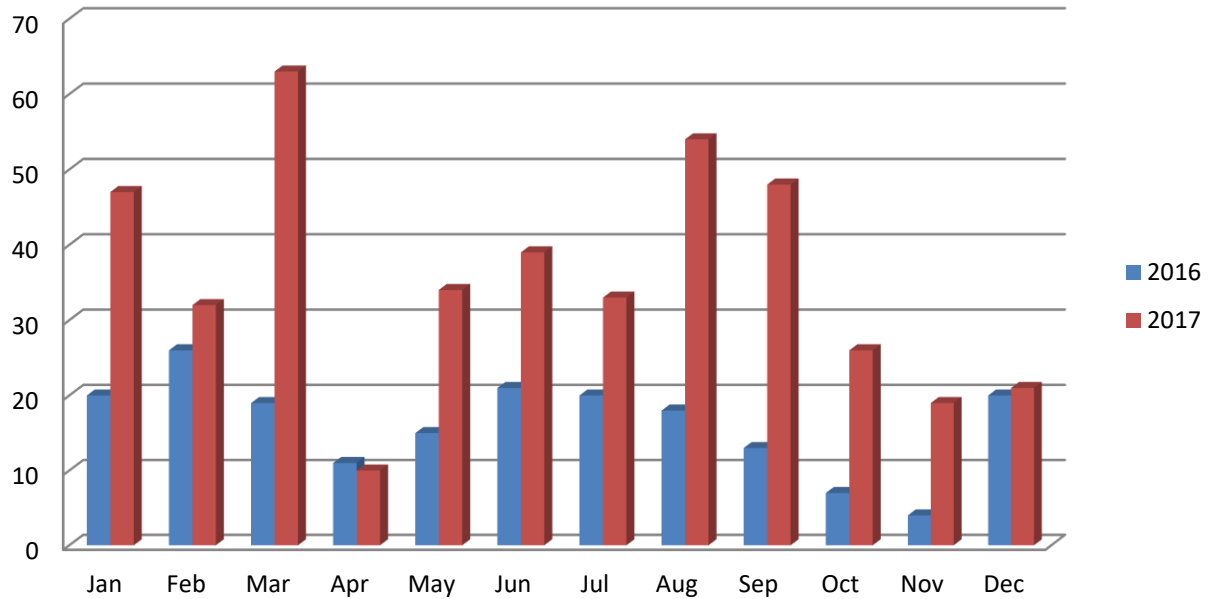
- 91,924 total licenses issued December 2017 CYTD: 49,007 new (53.3%) and 42,917 renewals (46.7%).
- 15.0% increase in licenses issued December 2017 YTD over December 2016.

TEXAS DEPARTMENT OF PUBLIC SAFETY

REGULATORY SERVICES DIVISION

December 2017

Metals Recycling Licenses and/or Registrations Issued



Metals Recycling Licensing Highlights:

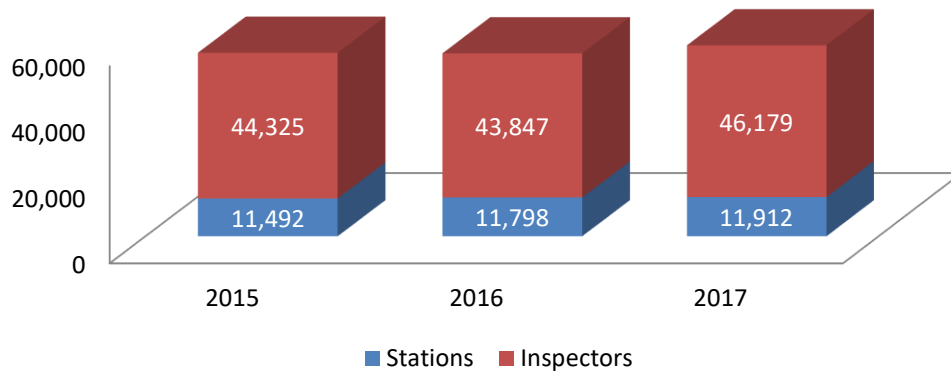
- 426 total licenses issued January-December 2017: 55 original (12.9% of total) and 371 renewals (87.1%).
- Equates to a 119.61% increase from December 2016 to December 2017.
- Certificates of registration are valid for two years; odd number years tend to have more activity.

TEXAS DEPARTMENT OF PUBLIC SAFETY

REGULATORY SERVICES DIVISION

December 2017

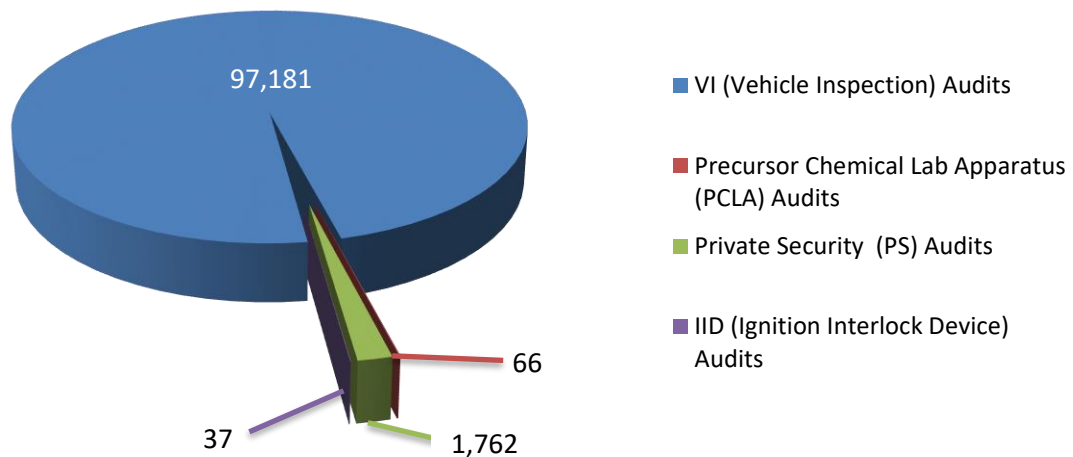
COMPLIANCE & ENFORCEMENT SERVICES Active Vehicle Inspection Entities



HIGHLIGHTS:

- 58,091 total active stations and inspectors as of December 2017, represents 17.8% increase from December 2016 total.
- Inspector licenses expire 8/31 in even numbered years. Station licenses expire 8/31 in odd numbered years. Any license not renewed by the renewal date is made inactive.

Number of Audits Completed December



HIGHLIGHTS:

- December YTD audits total 99,046 or a 1.7% increase from the December 2016 YTD total of 97,406.
- Vehicle Inspection (VI) audits represent 98.1% of total for December YTD 2017.

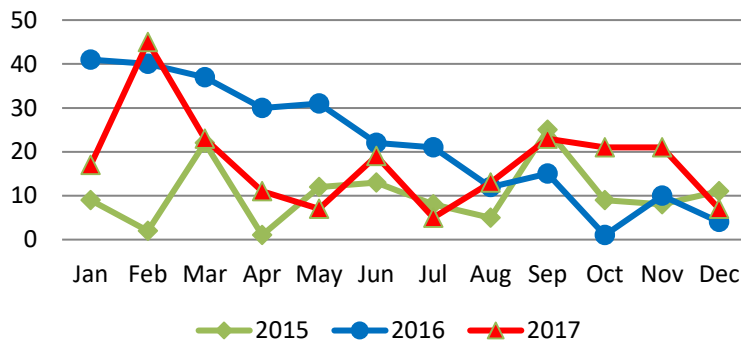
TEXAS DEPARTMENT OF PUBLIC SAFETY

REGULATORY SERVICES DIVISION

December 2017

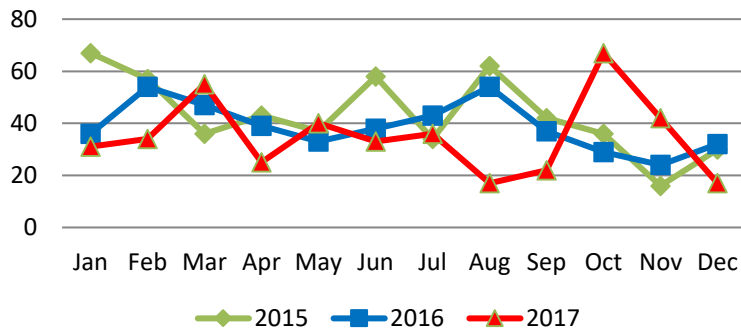
REGULATORY CRIMES SERVICE

Administrative Investigations



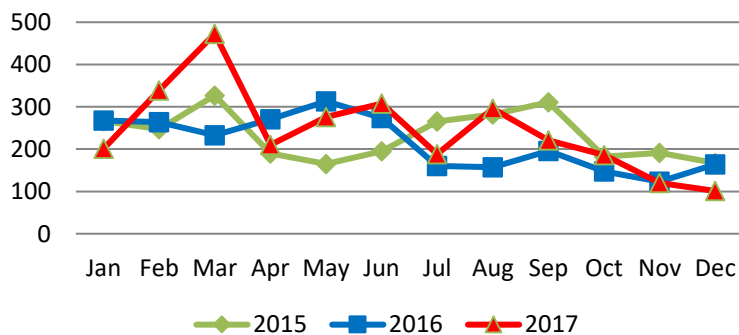
- Averaged 10/month for CY2015 and 22/month CY2016.
- Total of 212 from January-December 2017, compared to 264 for same period in 2016, averaging 17.74/month in 2017.

Investigations



- Averaged 43/month in CY2015 and 39/month in CY2016.
- Total of 419 January-December 2017, compared to 466 for same period in 2016.
- Averaging 34.9/month in 2017.

Inspections



- Averaged 232/month in CY2015 and 214/month in 2016.
- Total 2,919 for January-December 2017, compared to 2,570 for the same period in 2016. Averaging 243.3 inspections per month in 2017.

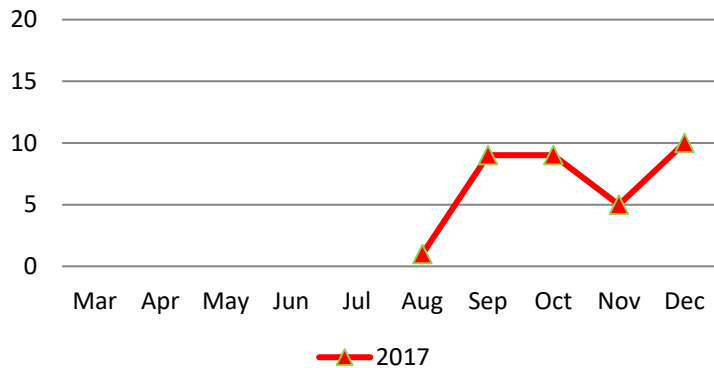
TEXAS DEPARTMENT OF PUBLIC SAFETY

REGULATORY SERVICES DIVISION

December 2017

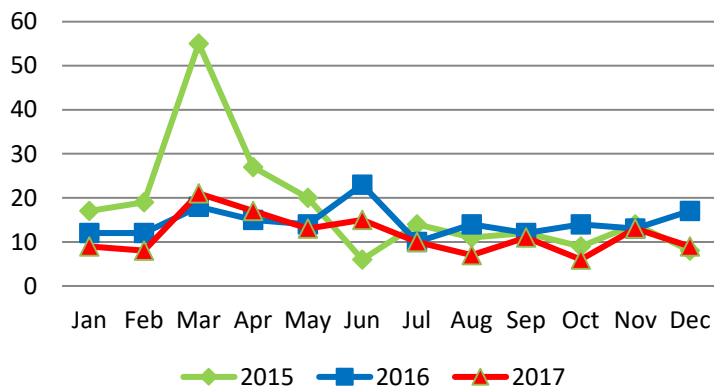
REGULATORY CRIMES SERVICE (cont'd.)

Compassionate Use Program Inspections



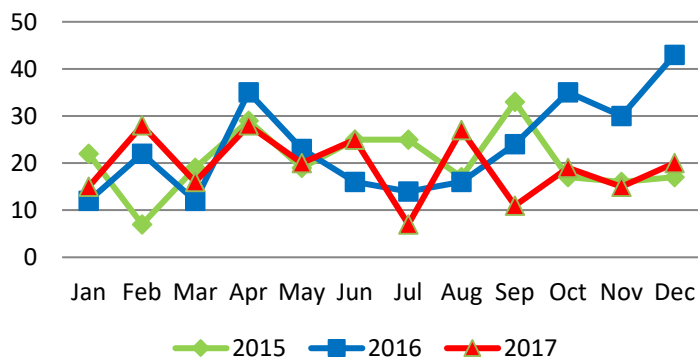
- Activity represents inspections of the three dispensing organizations licensed since 9/1/2017. Both random and scheduled inspections will continue on a weekly basis.

Arrests



- Average of 18/month in CY15 and 15/month in 2016.
- Total of 139 for January-December 2017 compared to 174 for the same period in 2016. Averaging 12/month in CY2017.

CID Referrals



- 246 total referrals each in CY2015 and 282 referrals in CY2016.
- Averaged 21 and 24 per month respectively.
- Total 231 for January-December 2017 compared to 282 for the same period in 2016. Averaging 19/month in 2017.