

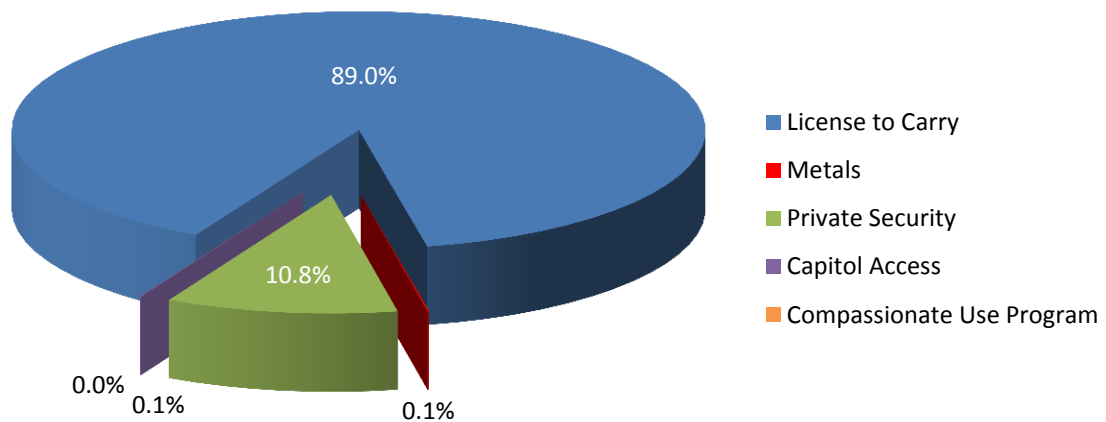
# TEXAS DEPARTMENT OF PUBLIC SAFETY

## REGULATORY SERVICES DIVISION

October 2017

### LICENSING & REGISTRATION SERVICE

#### Active Licenses & Registrations



License to Carry		Metals		Private Security			Capitol Access	Compassionate Use Program
Holders	Instructors	Dealers	Locations	Companies	Individuals	Schools	Holders	Holders
1,226,368	4,024	453	686	5,934	142,700	413	827	2

#### SERVICE HIGHLIGHTS:

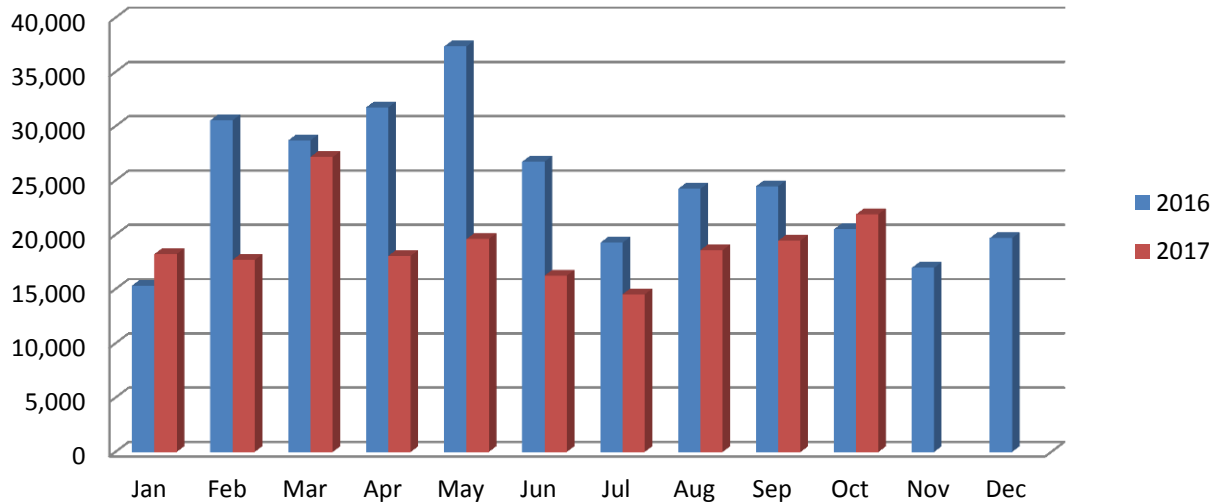
- Total Regulatory active licenses: 1,381,407.
- Active licenses increased 8.4% from October 2016 to October 2017.
- The largest component is individual license to carry holders/instructor certificates, which constitutes 89% of the total. Active LTCs increased 8.4% from October 2016 to October 2017.

# TEXAS DEPARTMENT OF PUBLIC SAFETY

## REGULATORY SERVICES DIVISION

October 2017

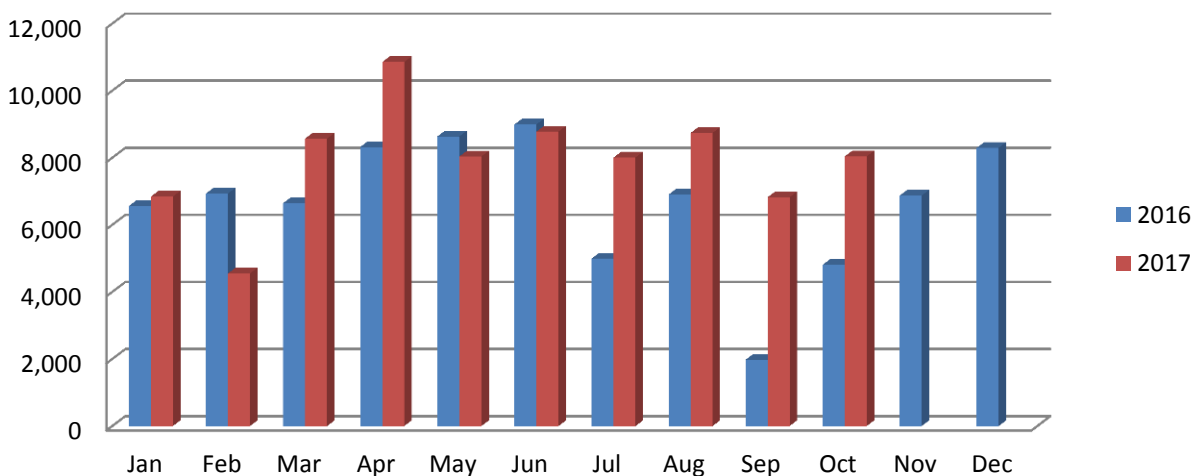
### Handgun Licenses and/or Registrations Issued



**Handgun Licensing Highlights:**

- 191,466 total licenses issued October CYTD: 258,874 were issued during the same period in 2016.
- October CYTD: 41% of those were original and 59% renewals.
- Average 19,147/month mailed January-October 2017 compared to 25,887 in the same period 2016.
- An additional 115,228 licenses were mailed January-October 2017 (composed of licenses subject to review, re-mails, returns by post office, address/name changes and lost/stolen replacements).

### Private Security Licenses and/or Registrations Issued



**Private Security Licensing Highlights:**

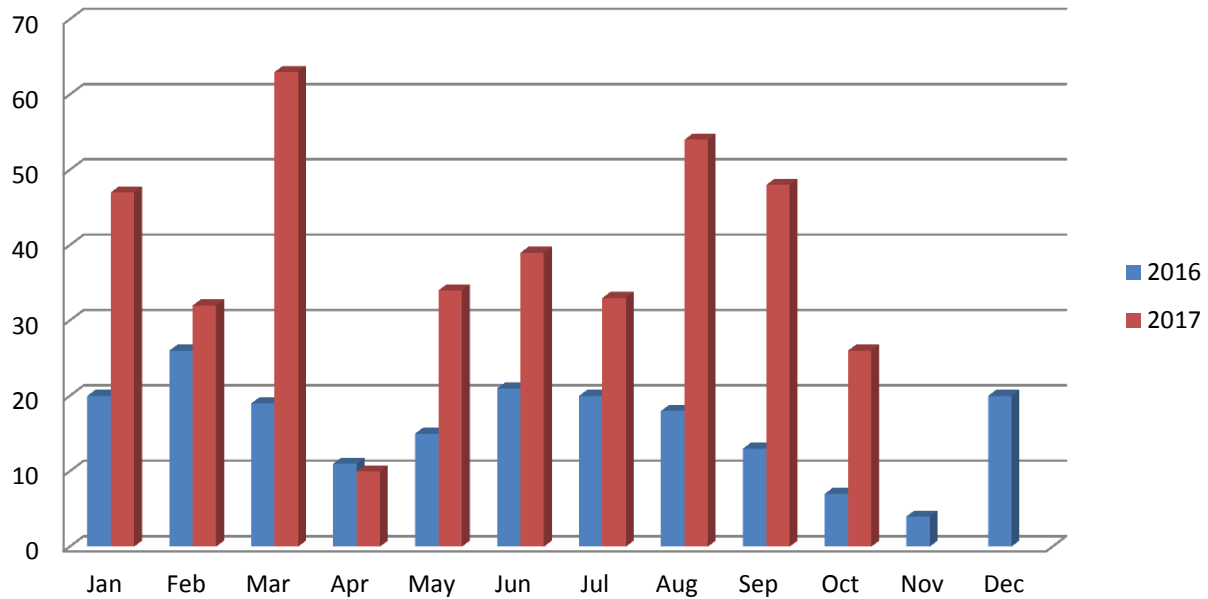
- 79,236 total licenses issued October 2017 CYTD: 42,104 new (53.1%) and 37,132 renewals (46.9%).
- 22.3% increase in licenses issued October 2017 YTD over October 2016.

# TEXAS DEPARTMENT OF PUBLIC SAFETY

## REGULATORY SERVICES DIVISION

October 2017

### Metals Recycling Licenses and/or Registrations Issued



#### **Metals Recycling Licensing Highlights:**

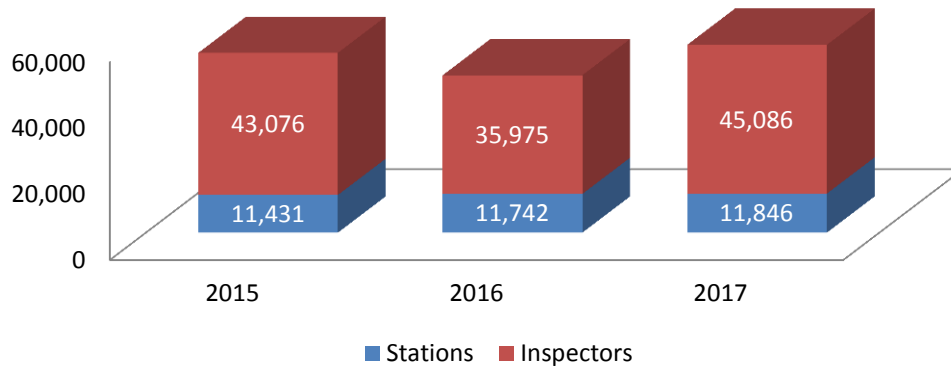
- 386 total licenses issued January-October 2017: 48 original (12.4% of total) and 338 renewals (87.6%).
- Equates to a 127.1% increase from October 2016 to October 2017.
- Certificates of registration are valid for two years; odd number years tend to have more activity.

# TEXAS DEPARTMENT OF PUBLIC SAFETY

## REGULATORY SERVICES DIVISION

October 2017

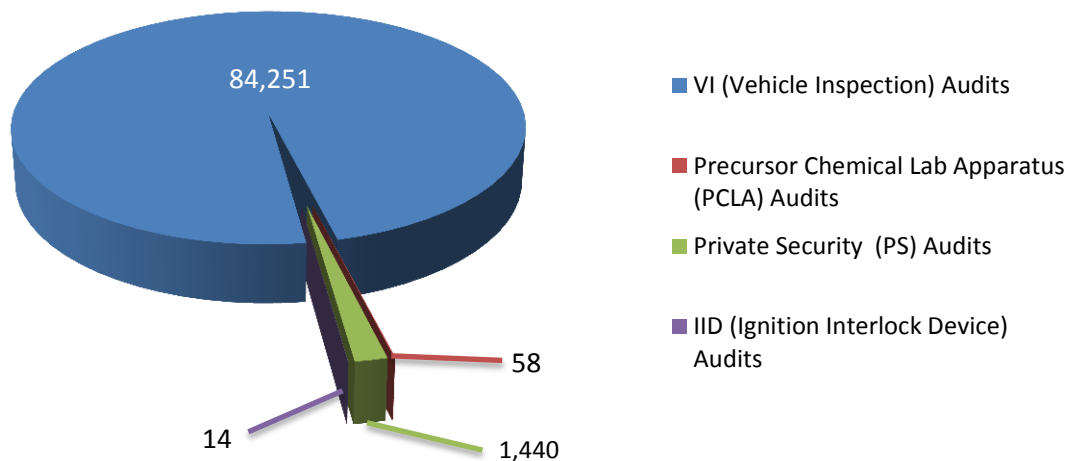
### COMPLIANCE & ENFORCEMENT SERVICES Active Vehicle Inspection Entities



**HIGHLIGHTS:**

- 56,932 total active stations and inspectors as of October 2017, represents 19.3% increase from October 2016 total.
- Inspector licenses expire 8/31 in even numbered years. Station licenses expire 8/31 in odd numbered years. Any license not renewed by the renewal date is made inactive.

### Number of Audits Completed October CYTD



**HIGHLIGHTS:**

- October YTD audits total 85,763 or a 4.4% increase from the October 2016 YTD total of 82,178.
- Vehicle Inspection (VI) audits represent 98.2% of total for October YTD 2017.

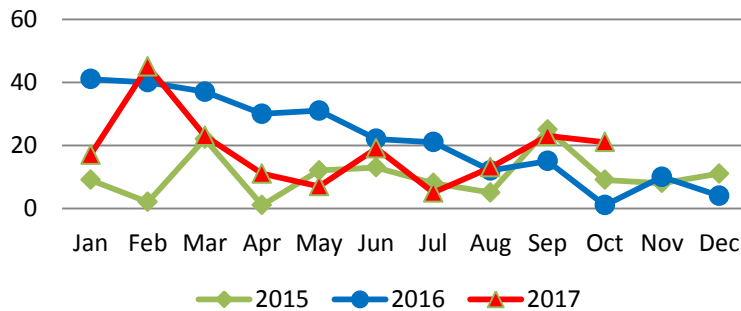
# TEXAS DEPARTMENT OF PUBLIC SAFETY

## REGULATORY SERVICES DIVISION

October 2017

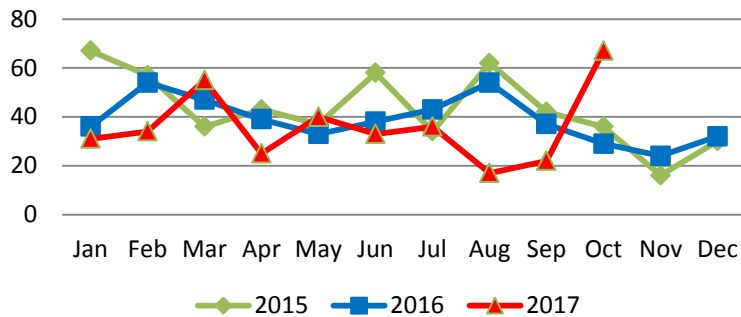
### REGULATORY CRIMES SERVICE

#### Administrative Investigations



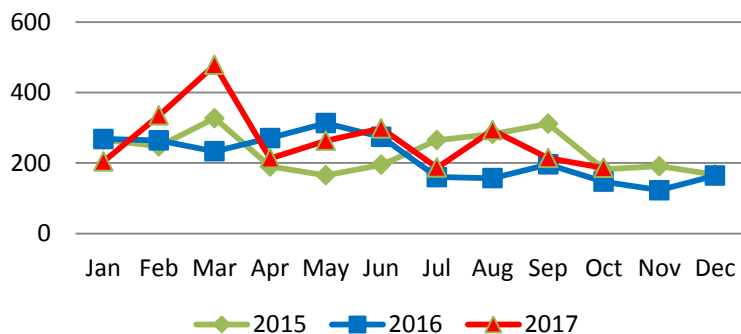
- Averaged 10/month for CY2015 and 22/month CY2016.
- Total of 184 for January-October 2017, compared to 250 for same period in 2016, averaging 18.4/month in 2017.

#### Investigations



- Averaged 43/month in CY2015 and 39/month in CY2016.
- Total of 360 January-October 2017, compared to 410 for same period in 2016.
- Averaging 36/month in 2017.

#### Inspections



- Averaged 232/month in CY2015 and 214/month in 2016.
- Total of 2,671 for January-October 2017, compared to 2,283 for the same period in 2016. Averaging 267 inspections per month in 2017.

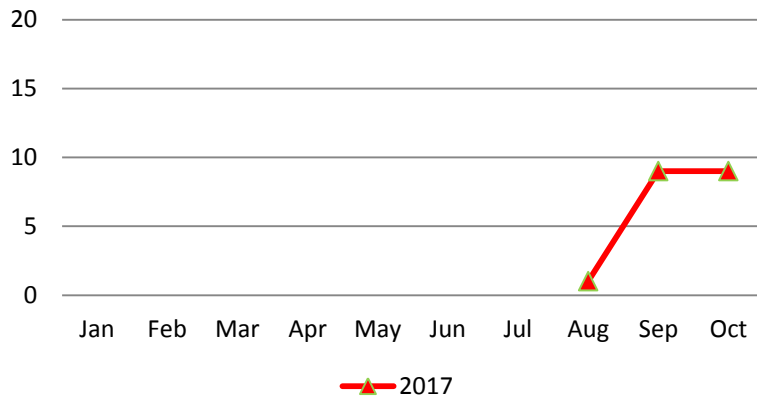
# TEXAS DEPARTMENT OF PUBLIC SAFETY

## REGULATORY SERVICES DIVISION

October 2017

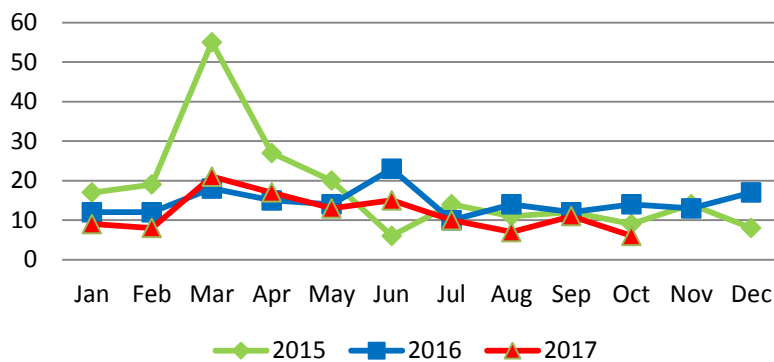
### REGULATORY CRIMES SERVICE (cont'd.)

#### Compassionate Use Program Inspections



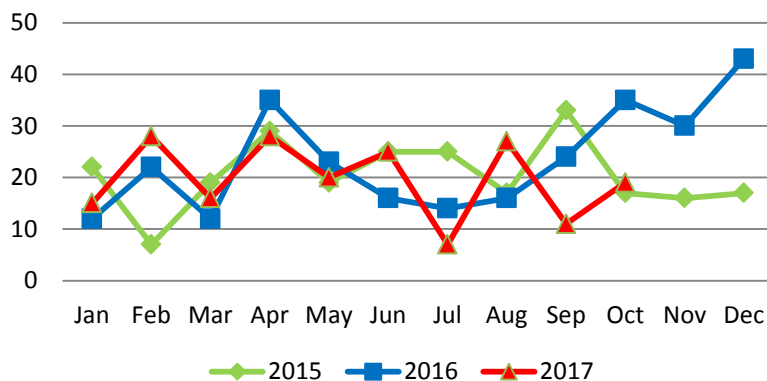
- Activity represents inspections of the two dispensing organizations licensed since 9/1/2017. Both random and scheduled inspections will continue on a weekly basis.

#### Arrests



- Average of 18/month in CY15 and 12/month in 2016.
- Total of 117 for January-October 2017 compared to 144 for the same period in 2016. Averaging 12/month in CY2017.

#### CID Referrals



- 246 total referrals each in CY2015 and 282 referrals in CY2016.
- Averaged 21 and 24 per month respectively.
- Total of 196 for January-October 2017 compared to 209 for the same period in 2016. Averaging 20/month in 2017.