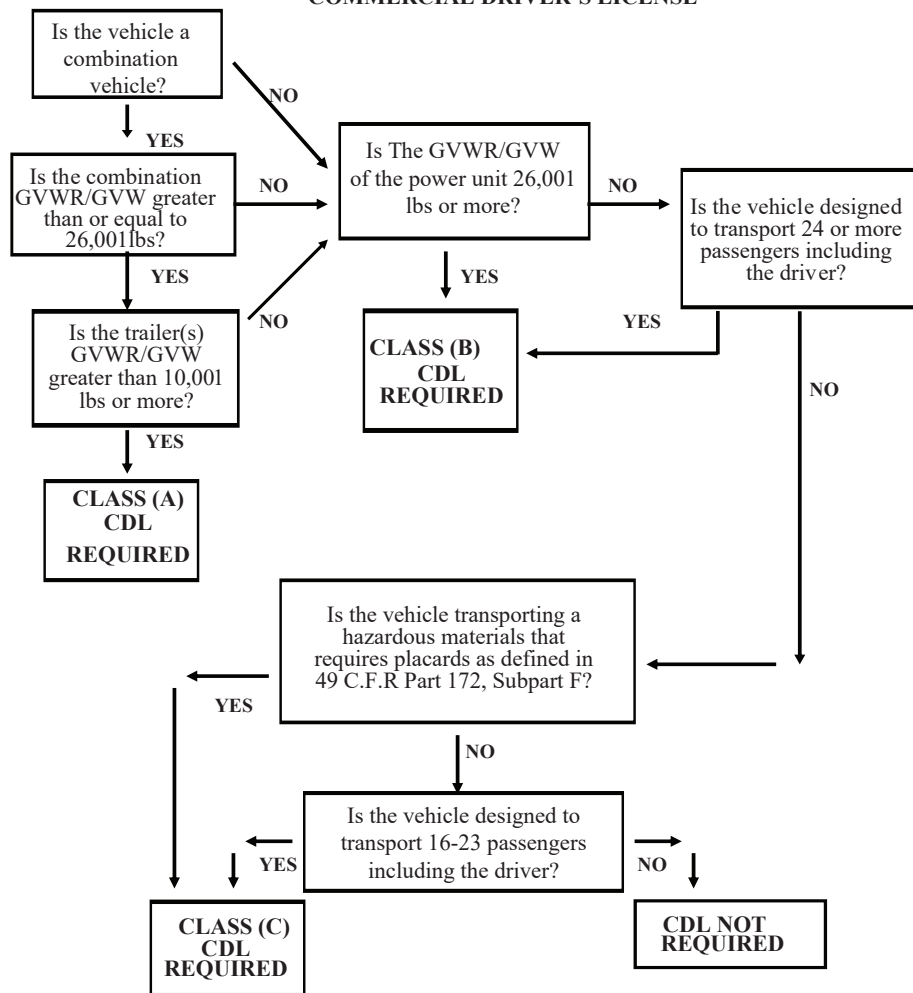


**TRC Sec. 522.041
COMMERCIAL DRIVER'S LICENSE**



CVE-21 (Rev 05/07/25)

**Interstate Exemptions
CFR 383.3**

Certain military drivers - Military Vehicle or CMV's operated by military personnel - active duty.

Farmers - within 150 air miles, not for-fire, transporting ag products, farm machinery and supplies

Firefighters and Emergency Response Vehicle Drivers who operate CMVs which are necessary to the preservation of life and property

Drivers used for the **removal of snow or ice** from a roadway by plowing, sanding, or salting - driver employed by local government

Covered Fam Vehicles (390.39) - operating in state of registration, traveling outside of home state within 150 air miles of farm or ranch.

**Intrastate Exemptions
TRC 522.004**

Farmers - within 150 air miles, not for-fire, transporting ag products, farm machinery and supplies

Firefighters and Emergency Response Vehicle Drivers who operate CMVs which are necessary to the preservation of life and property

Certain military drivers - Military Vehicle or CMV's operated by military personnel - active duty.

Recreational Vehicle that is driven for personal use.

Person operating a **vehicle owned, leased or controlled by an air carrier** on the premises of an airport.

Vehicle used exclusively to transport **seed cotton modules or cotton burs.**

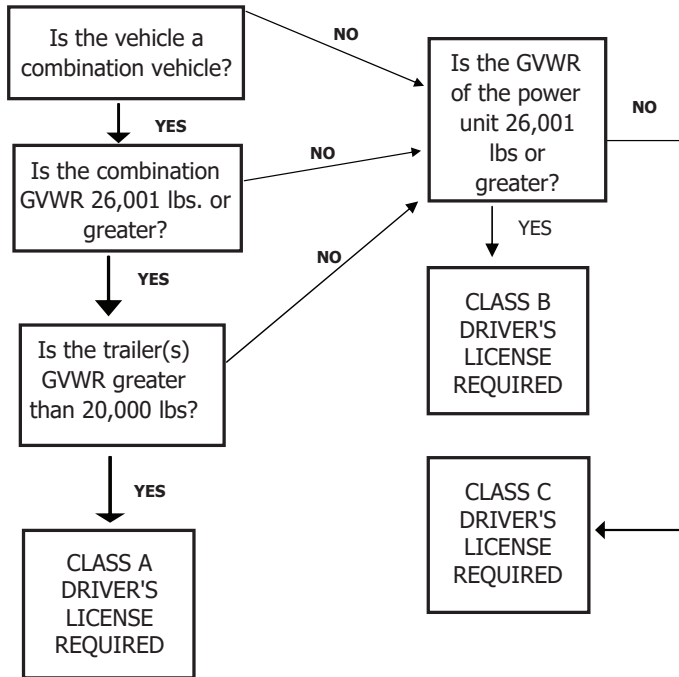
Transportation of Personal Property not in the furtherance of a commercial enterprise.

Operating **off road construction equipment** - road machine, farm tractor, or implement of husbandry on a highway (TRC 521.027).

TEXAS DRIVER'S LICENSE REQUIREMENTS FOR FARMERS

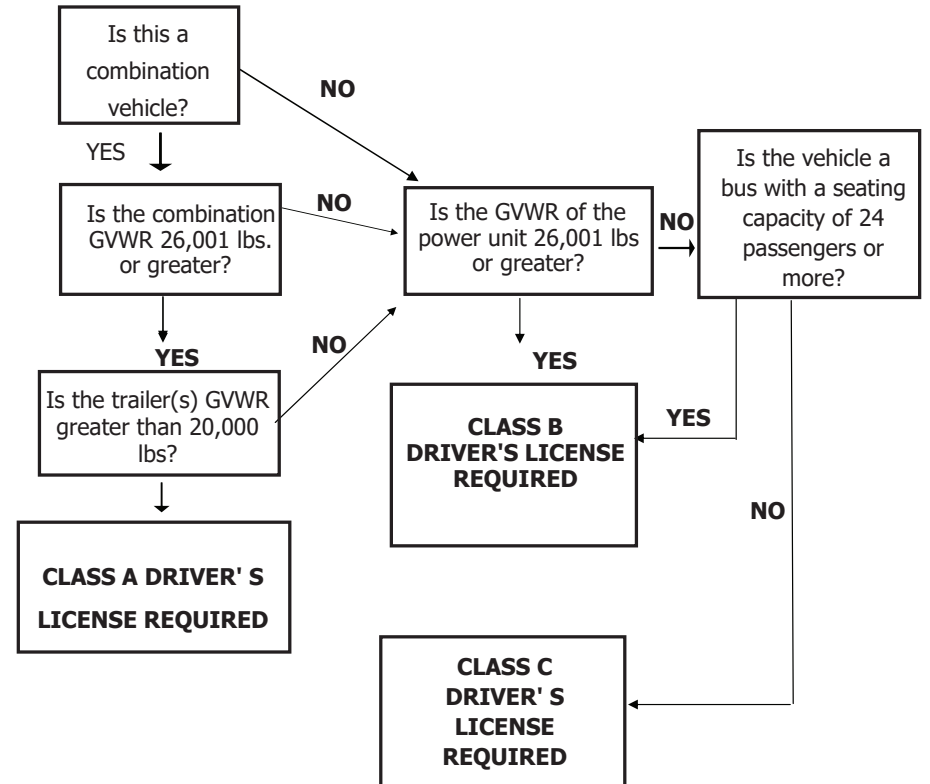
Texas Administrative Code 16.3 states a person operating a vehicle that is controlled and operated by a farmer which is used to transport agricultural products, farm machinery or farm supplies to or from a farm and is not used in the operation of a common or contract carrier AND used within 150 miles of the person's farm are exempt from Texas Commercial Driver's License (CDL).

Classification of Driver's License (Non-CDL) TRC 521.081 - 521.082 - 521-083



PERSON'S EXEMPTED FROM TEXAS CDL (EXCEPT FARMERS)

CLASSIFICATION OF DRIVER'S LICENSE (NON-CDL) TRC 521.081 - 521-082 - 521.083



NOTE: If the GVWR cannot be determined, then you must use the actual weight (GVW).