

Texas Department of Public Safety Texas Division of Emergency Management

Texas State Operations Center

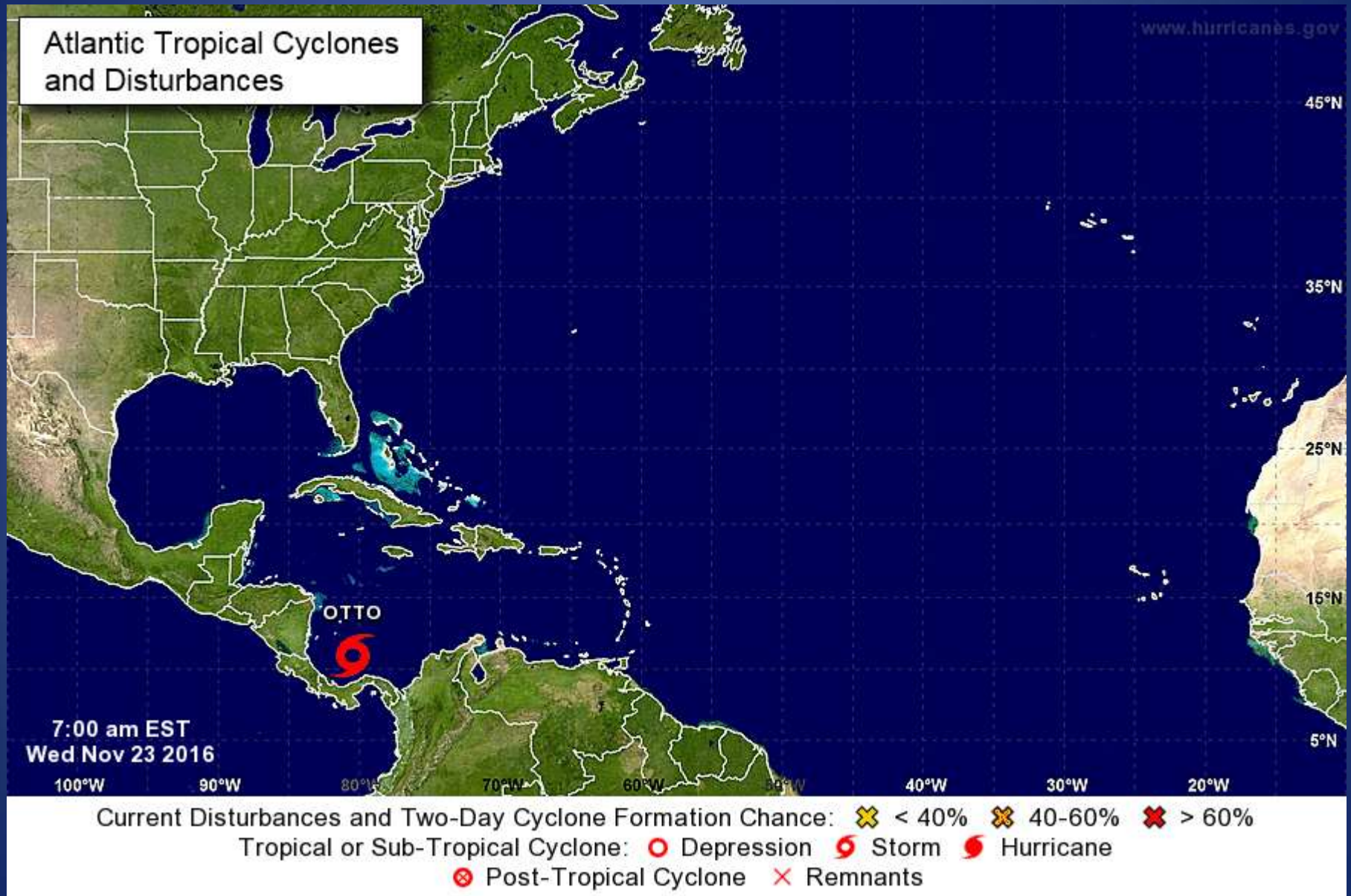


Situation Awareness Brief



Wednesday, November 23rd 2016
As of 0900 CST

Tropical Weather Awareness



Incidents Reported to the State Operations Center (last 24 hours)

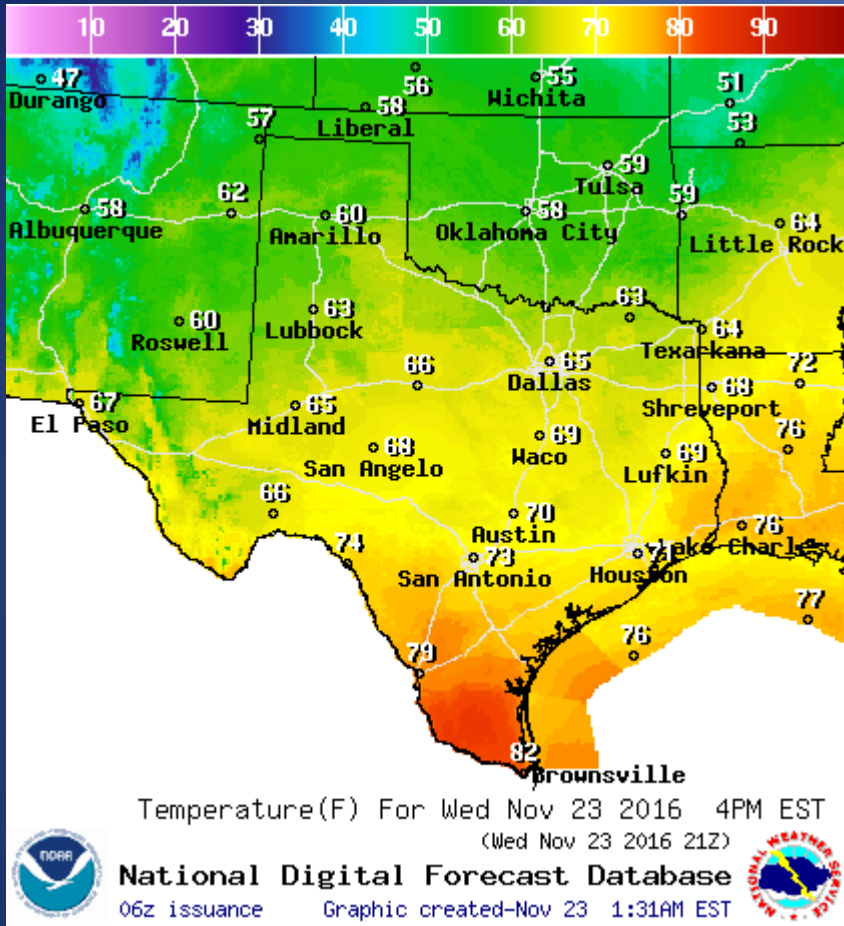
DATE	EVENT / INCIDENT	LOCATION (City/County)	Final Report: Y/N
11/22/16	Initial Report of a Road Closure (IH 45)	Walker County	N
11/23/16	Silver Alert for the San Antonio Police Department	San Antonio/Bexar County	N

Informational Products

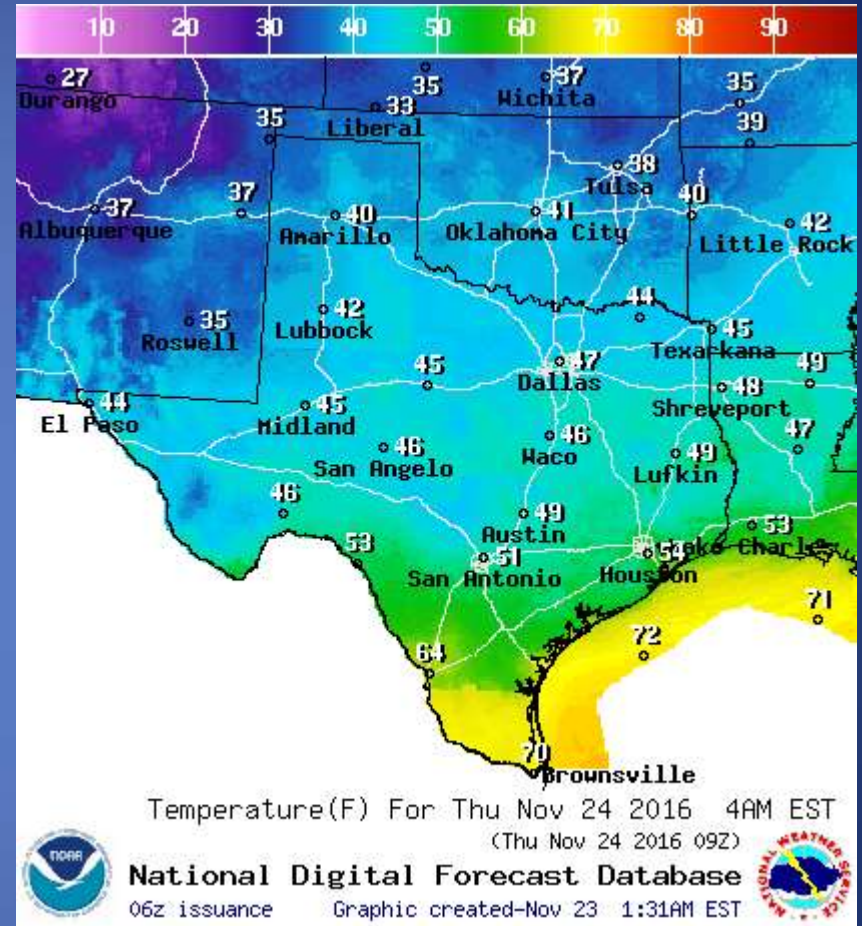
Distributed by the State Operations Center

DATE	SUBJECT
11/22/16	NWS Fort Worth: Update Severe Thunderstorm Potential - Tuesday
11/22/16	NWS West Gulf River Forecast Center: Showers and Thunderstorms Over the Next Few Days
11/22/16	NWS Houston/Galveston: Severe Weather Potential Update
11/22/16	NWS Shreveport: Strong to Severe Thunderstorms possible later this evening through the overnight hours
11/23/16	FEMA Region 6 Daily Situation Awareness Briefing
11/23/16	Daily NWS Threat Brief for Wednesday, 23 November, 2016 for FEMA Region 6
11/23/16	NWS El Paso: Weather Hazards Outlook, Wed November 23, 2016

Weather Forecast

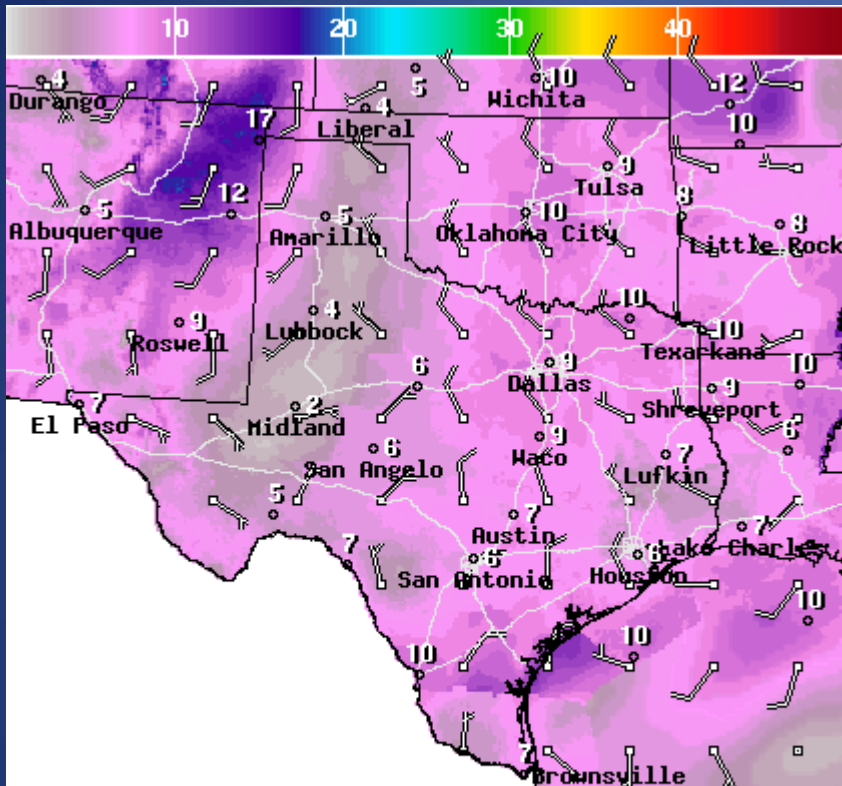


Highs



Lows

Weather Forecast



WindSpd(Kts) & WindDir For Wed Nov 23 2016 4PM EST
(Wed Nov 23 2016 21Z)

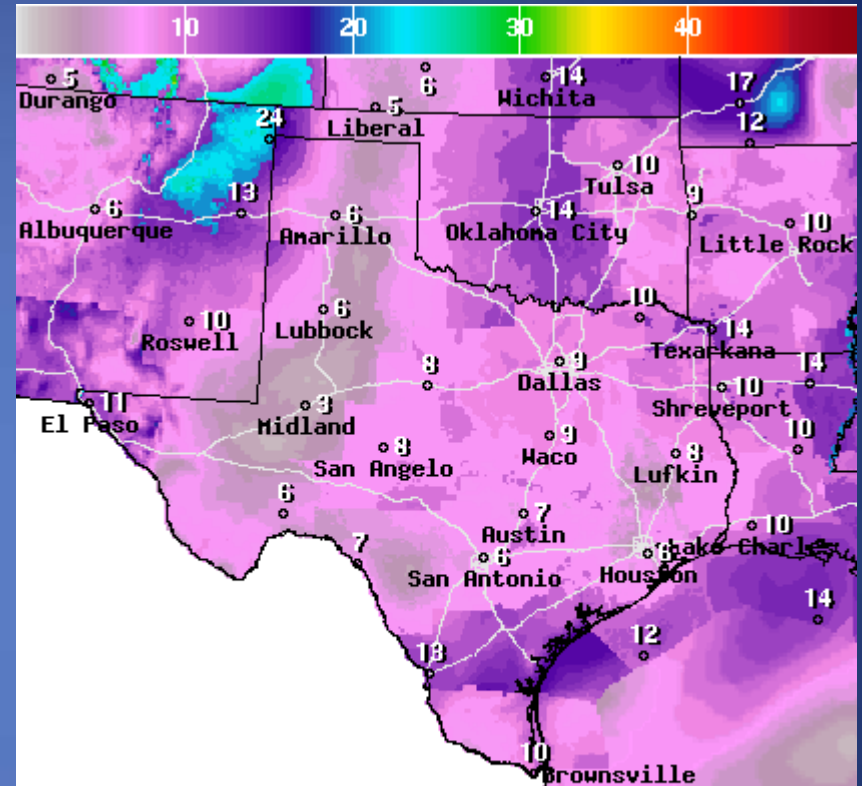


National Digital Forecast Database

05z issuance Graphic created-Nov 23 12:33AM EST



Wind Speeds



Wind Gust(Kts) Wed Nov 23 2016 4PM EST
(Wed Nov 23 2016 21Z)



National Digital Forecast Database

05z issuance Graphic created-Nov 23 12:35AM EST

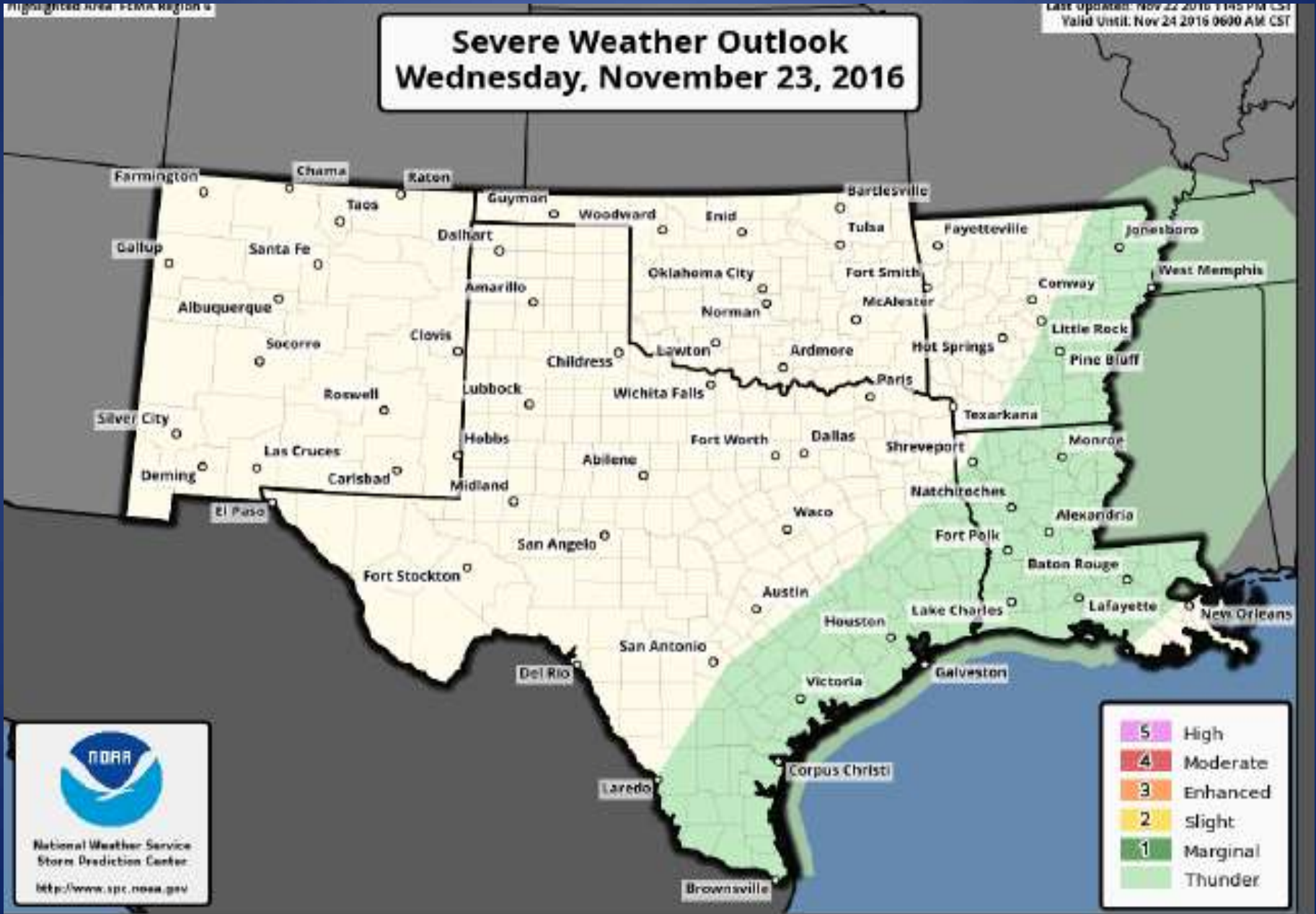


Gusts

Hazardous Weather

Severe Weather Outlook Wednesday, November 23, 2016

Last Updated: Nov 22 2016 11:45 PM CST
Valid Until: Nov 24 2016 0600 AM CST

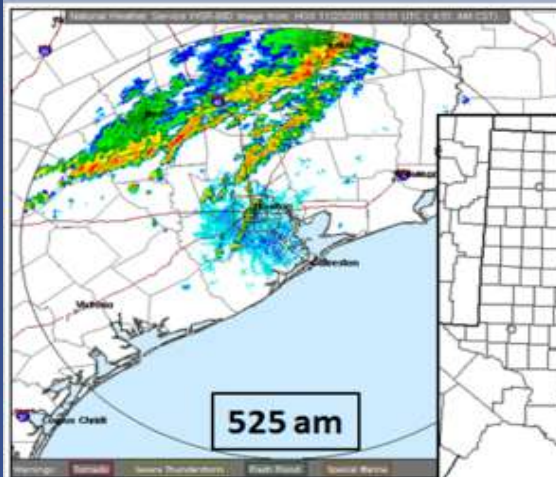


Hazardous Weather



Wednesday – rain ending this morning

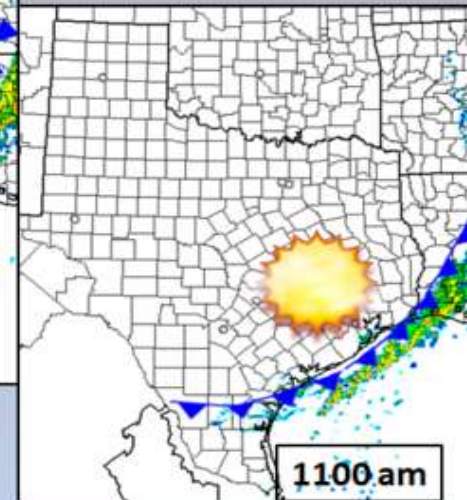
National Weather Service Houston/Galveston



525 am



900 am



1100 am



@NWSHouston
weather.gov/houston

Image 11/23/2016
Created 5:23 AM

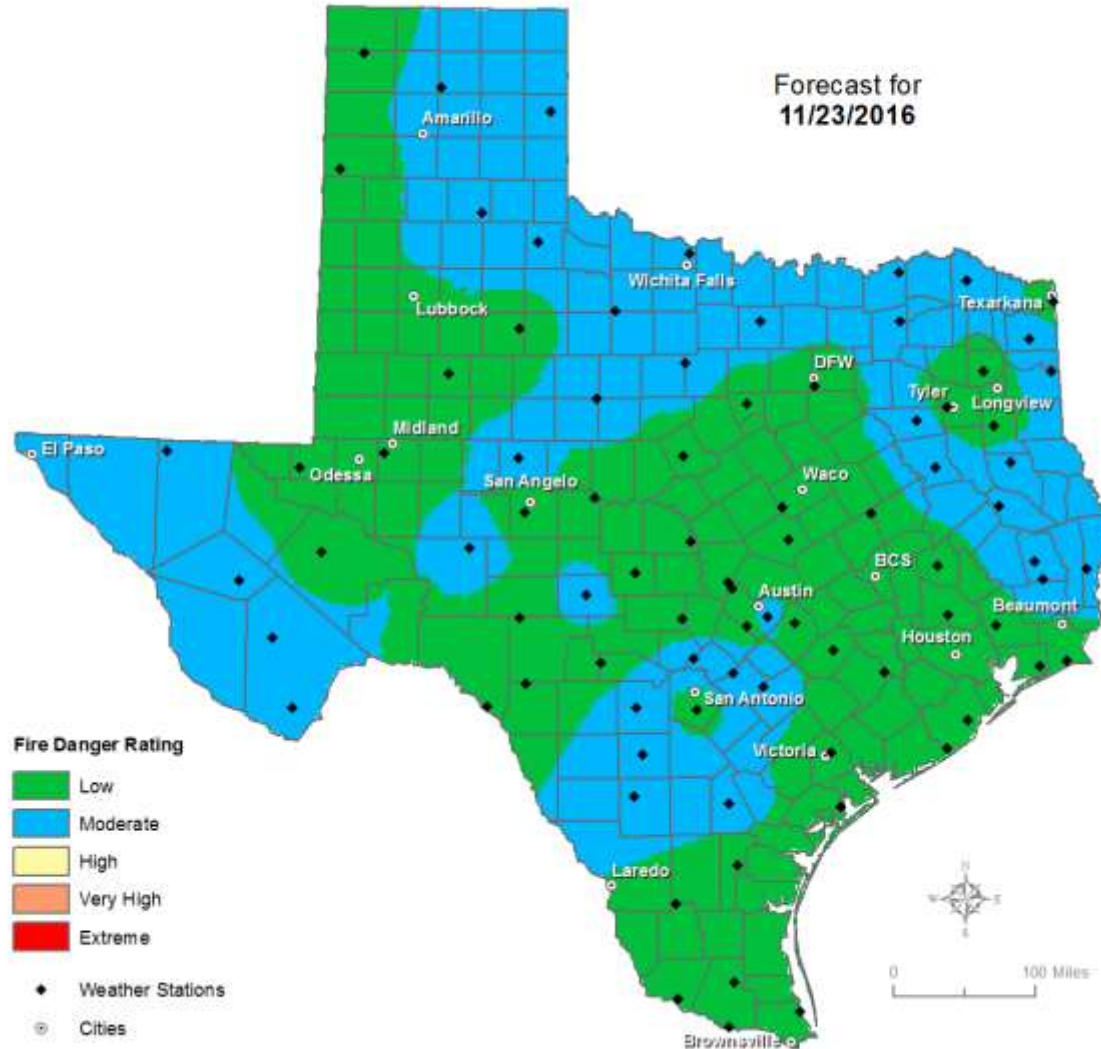
A few strong thunderstorms will be possible this morning as a cold front passes through the region. Gusty winds and small hail can be expected within the strongest storms. Front and its associated shower/storm activity will likely clear the coast by noon.

Weather Warning/Advisories Issued

DATE	WARNING TYPE	LOCATION
11/22/16	Severe Thunderstorm Warning	Cooke, Henderson, Kaufman, Montague Counties
11/23/16	Dense Fog Advisory	Bee, Brooks, Duval, Jim Hogg, Jim Wells, Kenedy, Kleberg, Live Oak, Nueces and San Patricio Counties
11/23/16	Small Stream Flood Advisory	Anderson, Freestone and Leon Counties

Fire Danger Forecast

Forecast Fire Danger



Burn Bans and KBDI INDEX

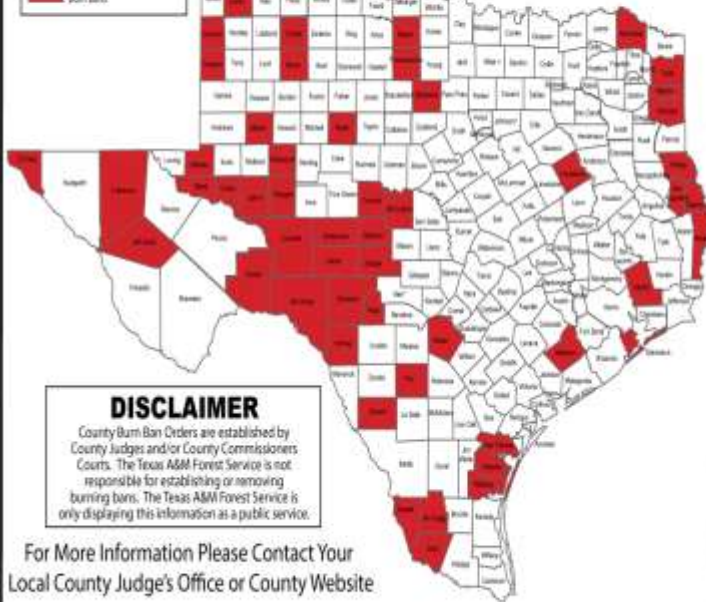
OUTDOOR BURN BANS

November 23, 2016



Counties without Established Burn Bans
 Counties with Established Burn Bans

Email updates to:
burnban@tfs.tamu.edu



DISCLAIMER

County Burn Ban Orders are established by County Judges and/or County Commissioners Courts. The Texas A&M Forest Service is not responsible for establishing or removing burning bans. The Texas A&M Forest Service is only displaying this information as a public service.

For More Information Please Contact Your Local County Judge's Office or County Website

RED FLAG WARNINGS: www.weather.gov

Burn Ban RSS feed available at <http://tfsrpt.tamu.edu/wildfires/BurnBan.xml>

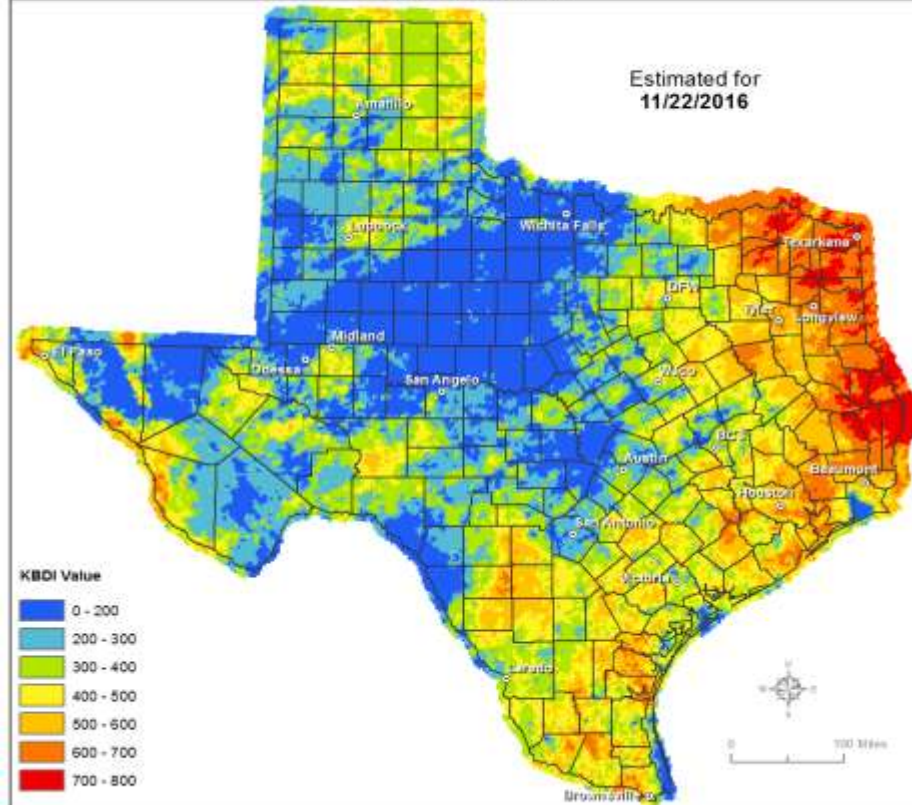
Counties with Burn Bans: 65

- | | |
|---------------|--------------|
| Armstrong | Sherman |
| Baylor* | Star |
| Beauregard | Stephens |
| Beck | Sutton |
| Brewster | Swisher |
| Brewster | Terrell |
| Castro | Throckmorton |
| Cochran | Upton |
| Concho | Val Verde |
| Cook | Ward |
| Crockett | Wharton |
| Crosby | Wheeler |
| Culberson | Winkler* |
| Dallas | Yoakum |
| Deaf Smith | Zapata |
| Dimmit | |
| Edwards | |
| El Paso | |
| Freestone | |
| Frio | |
| Galveston | |
| Garza | |
| Glasscock | |
| Harrison | |
| Hardy | |
| Hutchinson | |
| Jeff Davis | |
| Jim Hogg | |
| Kinney | |
| Kinney | |
| Meeker | |
| Lamb | |
| Liberty | |
| Marion | |
| Martin | |
| McCulloch | |
| Menard | |
| Moore | |
| Newton | |
| Nolan | |
| Nueces | |
| O'Donoghue | |
| Pettit | |
| Randall | |
| Roagan | |
| Real | |
| Red River | |
| Sabine | |
| San Augustine | |
| San Patricio | |
| Schleicher | |
| Shelby | |

Keetch-Byram Drought Index

(4 km x 4 km resolution)

Estimated for
11/22/2016



KBDI Value

- 0 - 200
- 200 - 300
- 300 - 400
- 400 - 500
- 500 - 600
- 600 - 700
- 700 - 800

TEXAS A&M
AGRI LIFE
RESEARCH

Produced by TAMU Spatial Sciences Laboratory
in partnership with Texas A&M Forest Service

TEXAS A&M
FOREST SERVICE

Fire Activity (*Last 24 Hours)

Reports 694 (+5) fires and 115,090 (+23) acres destroyed this year. There are 66 (no change) counties with burn bans. The Keetch-Byram Drought Index list 94 (no change) counties with an average over 400.

